


Ekwç Hé Naidé

Living with Caribou



Alfred Manseau


Presentation to IAIAWNC Conference
Cultural Impact Assessment: Beyond the Biophysical, February 28, 2008

Sahtu Caribou Traditional Knowledge Study
Walter Bayha, Anne Marie Jackson, Dora Grandjambe, Richard Kochon,
Micheline Manseau, Deborah Simmons

Ekwç Hé Naidé

Outline

1. Walter Bayha
A K'asho Got'ine Case Study
2. Richard Kochon/Dora Grandjambe
Dene and Caribou
3. Anne Marie Jackson
Dene Youth, Caribou, and Culture
4. Deborah Simmons
Assessments Dene Way?



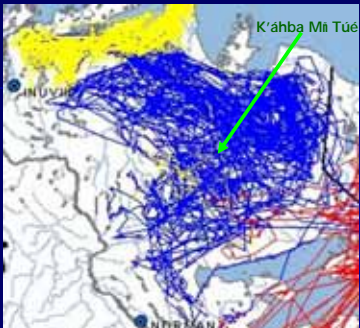
February 28, 2008 Living With Caribou-IAIAWNC

A K'asho Got'ine Case Study

Walter Bayha


- A social-ecological landscape (caribou/people/development)
- History: Saying yes to development, saying no to development
- What we have learned

February 28, 2008 Living With Caribou-IAIAWNC 3




Bluenose West Range 2006 - ENR

February 28, 2008 Living With Caribou-IAIAWNC 4



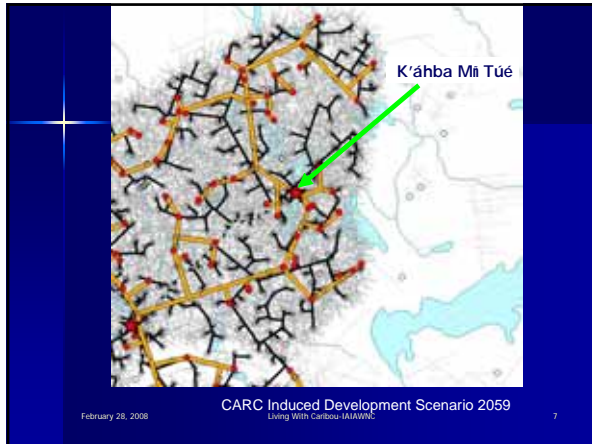
Dene Nation Traditional Trails

February 28, 2008 5



Nezi / Nehzi (place names incomplete, not verified)

February 28, 2008 6



K'áhba Mī Túé (K'asho Gotine) A Case Study

1999	Sahtu Land Use Planning process	× Île
2001	Winter road construction, beginning of petroleum development boom	✓ Hêæê
2006	K'áhba Mī Túé ends support for development	× Île
2007	SRRB Caribou Hearing, FGH	Listening

February 28, 2008 Living With Caribou-IAIAWNC 8

Land Use Planning, 1999

- Several intensive community-based qualitative surveys
- Community meetings
- Consensus that all the land is sacred, and should not be divided into zones
- Consensus that there should be *no* winter road.

× Île

February 28, 2008 Living With Caribou-IAIAWNC

New Development, 2001

1. Access & Benefits Agreements with Ayōnī Kī Land Corp
2. Numerous applications for permits and licenses

✓ Hêæê

February 28, 2008 Living With Caribou-IAIAWNC 10

Access & Benefits Agreements

- Industry-controlled engagement and negotiations (seen by community as one and the same)
- Promotional activities
- Supposed to account for social and cultural impacts
- Very little room for concerns to be expressed

✓ Hêæê

February 28, 2008 Living With Caribou-IAIAWNC 11

Licences and Permits Sahtu Land and Water Board

- Minimum requirements for TK
- No requirements for social/cultural impact assessments

✓ Hêæê

February 28, 2008 Living With Caribou-IAIAWNC 12

Community Says No, 2006

- Growing community concerns about caribou moving away
- Concerns about social impacts
- Community stops supporting development



February 28, 2008 Living With Caribou-IAIAWNC 13

Ayí Keots'ihæô What we have learned

- Community role – góhé (participation)
- Why Dene might say "Hçæê"
- Why Dene might say "Île"
- Ets'ewékw'ê (really listening)

February 28, 2008 Living With Caribou-IAIAWNC 14

Góhé Participation

"The purpose of the establishment of boards by this Act is to enable residents of the Mackenzie Valley to participate in the management of its resources for the benefit of the residents and of other Canadians" (1998, 1.9.1)

Mackenzie Valley Resource Management Act

February 28, 2008 Living With Caribou-IAIAWNC 15

✓ Hçæê

- Industry are seen to be the experts
- Emphasis on benefits (ABAs)
- "Yes is better than no"
- Leaders are respected

February 28, 2008 Living With Caribou-IAIAWNC 16

x Île

- Community *experience* of impacts
- Impacts on caribou are not only environmental – social, economic and *cultural*
- People's *relationships* with caribou
- Family, community and regional *relationships*

February 28, 2008 Living With Caribou-IAIAWNC 17

Ets'ewékw'ê Really Listening

- Listening as Dene discipline
- Listening to collectives
- Listening to diverse voices/knowledges
- Understanding in context, as opposed to data mining

February 28, 2008 Living With Caribou-IAIAWNC 18

Chief Richard Kochon Behdzi Ahda First Nation



Just came back from trapping, broke trail, fixed up tent (broken ridge pole), visited Dad's Dad's Dad Oudzedahka's campsite - first time since 1968.
(Intro to audio recording)



Dora
Grandjambe
Interpreter

Horton Lake Community Hunt September 2008



February 28, 2008

Living With Caribou-IAIAWNC

21



February 28, 2008

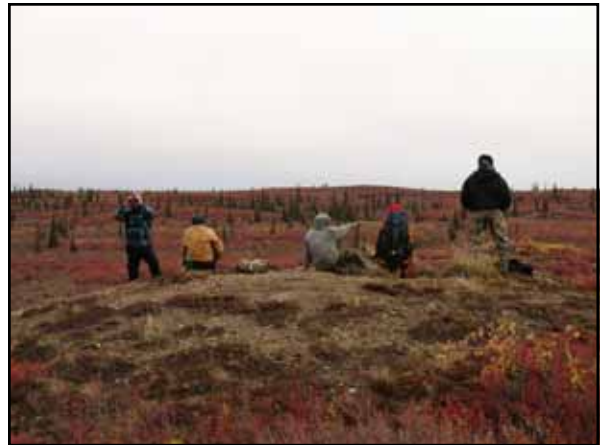
Living With Caribou-IAIAWNC

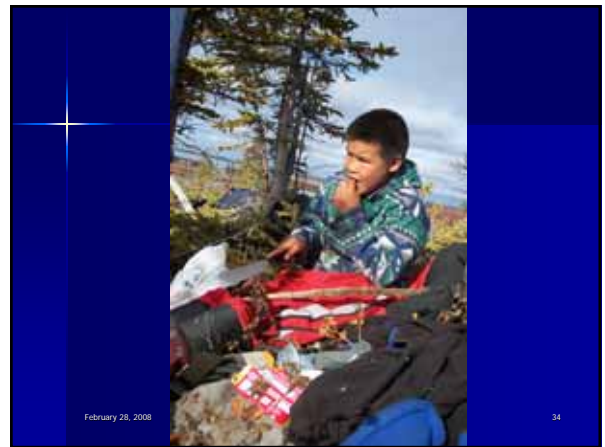
22



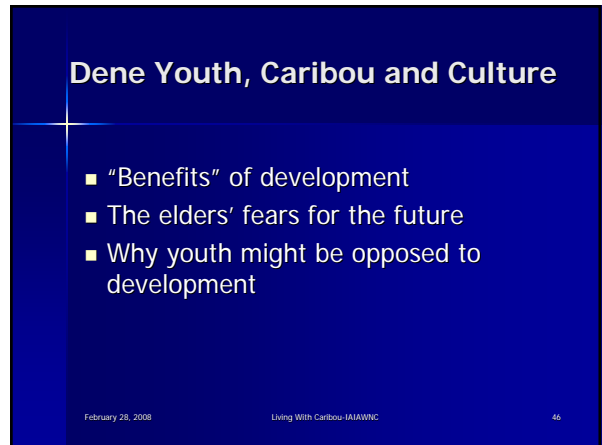
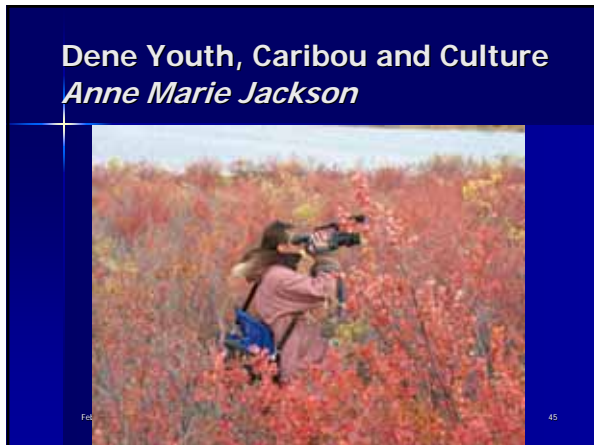
February 28, 2008

24





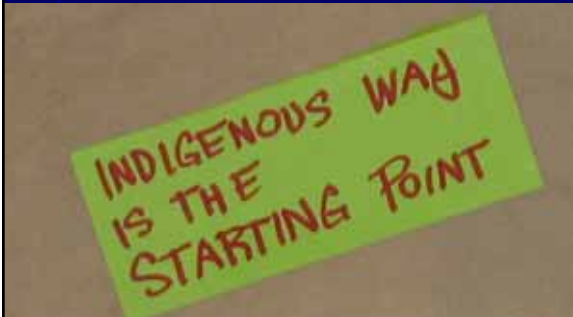




Assessments Dene Way? *Deborah Simmons*

- Valued components?
- Indicators?
- Thresholds?
- Longitudinal questionnaire-based surveys?
- Quantitative analysis?
- Modelling?
- Quantitative Analysis?

February 28, 2008 Living With Caribou-IAIAWNC 49



From WATCHING THE LAND: Traditional Knowledge and Cumulative Impact Monitoring Practitioners Workshop, Yellowknife, February 4-9, 2008 50

Ets'ewékw'ê *Really Listening*

- Experiencing the land
- Experiencing relationships: discussion, analysis, and verification
- Dene concepts/language
- Communicating what others need to know
- Role of trained researchers
- Participating in decision-making

February 28, 2008 Living With Caribou-IAIAWNC 51

Dene Náower£ Chets'elæ *Gathering Dene Knowledge*

- Flexible, evolving (Dene Náower£ is a verb)
- Eclectic
- Cumulative
- Holistic
- Qualitative
- Disciplined/rigorous (quality, respect)
- Community owned/controlled

February 28, 2008 Living With Caribou-IAIAWNC 52



February 28, 2008 Living With Caribou-IAIAWNC
"Working Together" - Taking Care of the Land Camp, Kelly Lake, August 6-10, 2008 53

Máhsi

- Chief Richard Kochon and Behdzi Ahda First Nation
- Dr. Micheline Manseau, Natural Resources Institute, University of Manitoba
- Déline Knowledge Project Team: Jane Modeste, Jack Goulet, Michael Neyelle, Doris Taneton
- Déline, K'asho Got'ine and Behdzi Ahda Renewable Resources Councils
- Sahtu Renewable Resources Board
- ENR, INAC

Photos: DL Simmons, Susan Kutz, Nathan Debruyn, Alasdair Veitch, Walter Bayha
Drawings: Alfred Masuzumi
February 28, 2008 Living With Caribou-IAIAWNC



